

The Levett School



The Levett School

Positivity | Determination | Reflection | Integrity

Child Protection and Safeguarding Policy

<i>Policy agreed by Governors on:</i>	31.01.2023
<i>Review date for Governors:</i>	October 2022
<i>Allocated Group/Person to Review:</i>	Claire Whitehead
<i>Agreed frequency of Review, by allocated person:</i>	Every Year
<i>Last Review date:</i>	05/10/22

Lower School, Melton Road, Sprotbrough, Doncaster, DN5 7SB

Upper School, Lansdowne Road, Intake, Doncaster, DN2 6QN

Important coronavirus (COVID-19) update

This policy has been updated in line with the current guidance from the UK government. We have included [Appendix A](#) which provides detailed safeguarding considerations for the current circumstances. Please have due regard for the stipulations within this amendment during full opening. Once pupils return to school full time, schools can refer to the provisions within the main body of this policy.

Contents:

Statement of intent

1. Definitions
2. Legal framework
3. Roles and responsibilities
4. Inter-agency working
5. Abuse and neglect
6. Types of abuse and neglect
7. FGM
8. Forced marriage
9. Child sexual exploitation (CSE)
10. Child criminal exploitation (CCE)
11. Mental health
12. Homelessness
13. County lines
14. Serious violence
15. Pupils with family members in prison
16. Pupils required to give evidence in court
17. Contextual safeguarding
18. Preventing radicalisation
19. A child missing from education
20. Pupils with SEND
21. Alternative provision
22. Work experience
23. Homestay exchange visits
24. Private fostering
25. Concerns about a pupil
26. Early help
27. Managing referrals
28. Concerns about staff members and safeguarding practices
29. Dealing with allegations of abuse against staff
30. Allegations of abuse against other pupils (peer-on-peer abuse)
31. Communication and confidentiality
32. Online safety
33. Mobile phone and camera safety
34. Sports clubs and extracurricular activities
35. Safer recruitment
36. Single central record (SCR)
37. Staff suitability
38. Training
39. Monitoring and review

Appendices

- a) [Safeguarding During the Coronavirus \(COVID-19\) Pandemic](#)
- b) [Staff Disqualification Declaration](#)
- c) [Safeguarding Reporting Process](#)
- d) [Contacts and Advice](#)

Statement of intent

Levett School is committed to safeguarding and promoting the welfare, both physical and emotional, of every pupil both inside and outside of the school premises. We implement a whole-school preventative approach to managing safeguarding concerns, ensuring that the wellbeing of pupils is at the forefront of all action taken.

This policy sets out a clear and consistent framework for delivering this promise, in line with safeguarding legislation and statutory guidance.

It will be achieved by:

- Creating a culture of safer recruitment by adopting procedures that help deter, reject or identify people who might pose a risk to children.
- Teaching pupils how to keep safe and recognise behaviour that is unacceptable.
- Identifying and making provision for any pupil that has been subject to abuse.
- Ensuring that members of the governing board, the headteacher and staff members understand their responsibilities under safeguarding legislation and statutory guidance, are alert to the signs of child abuse and know to refer concerns to the DSL.
- Ensuring that the headteacher and any new staff members and volunteers are only appointed when all the appropriate checks have been satisfactorily completed.

The DSL is **Hayley Johnston** In the absence of the DSL, child protection matters will be dealt with by: **Rachel Kelly**

Acronyms

This policy contains a number of acronyms used in the Education sector. These acronyms are listed below alongside their descriptions.

Acronym	Long form	Description
CCE	Child criminal exploitation	A form of abuse where an individual or group takes advantage of an imbalance of power to coerce, manipulate or deceive a child into taking part in criminal activity in exchange for something the victim needs or wants, for the financial advantage or other advantage of the perpetrator or facilitator, and/or through violence or the threat of violence.
CSCS	Children's social care services	The branch of the local authority that deals with children's social care.
CSE	Child sexual exploitation	A form of sexual abuse where an individual or group takes advantage of an imbalance of power to coerce, manipulate or deceive a child into sexual activity in exchange for something the victim needs or wants, for the financial advantage, increased status or other advantage of the perpetrator or facilitator, and/or through violence or the threat of violence.
DBS	Disclosure and barring service	The service that performs the statutory check of criminal records for anyone working or volunteering in a school.
DfE	Department for Education	The national government body with responsibility for children's services, policy and education, including early years, schools, higher and further education policy, apprenticeships and wider skills in England.
DPO	Data protection officer	The appointed person in school with responsibility for overseeing data protection strategy and implementation to ensure compliance with the UK GDPR and Data Protection Act.
DSL	Designated safeguarding lead	A member of the senior leadership team who has lead responsibility for safeguarding and child protection throughout the school.
EEA	European Economic Area	The Member States of the European Union (EU) and three countries of the European Free Trade Association (EFTA) (Iceland, Liechtenstein and Norway; excluding Switzerland).
EHC plan	Education, health and care plan	A funded intervention plan which coordinates the educational, health and care needs for pupils who have significant needs that impact on their learning and access to education. The plan identifies any additional support needs or interventions and the intended impact they will have for the pupil.

ESFA	Education and Skills Funding Agency	An agency sponsored by the Department for Education with accountability for funding education and skills training for children, young people and adults.
FGM	Female genital mutilation	All procedures involving the partial or total removal of the external female genitalia or other injury to the female genital organs. FGM is illegal in the UK and a form of child abuse with long-lasting harmful consequences.
UK GDPR	UK General Data Protection Regulation	Legislative provision designed to strengthen the safety and security of all data held within an organisation and ensure that procedures relating to personal data are fair and consistent.
HBA	‘Honour-based’ abuse	So-called ‘honour-based’ abuse involves crimes that have been committed to defend the honour of the family and/or community.
HMCTS	HM Courts and Tribunals Service	HM Courts and Tribunals Service is responsible for the administration of criminal, civil and family courts and tribunals in England and Wales. HMCTS is an executive agency, sponsored by the Ministry of Justice.
IICSA	Independent Inquiry into Child Sexual Abuse	The Independent Inquiry into Child Sexual Abuse is analysing case files from the Disclosure and Barring Service to learn more about the behaviours of perpetrators who have sexually abused children in institutions, and to understand institutional responses to these behaviours.
KCSIE	Keeping children safe in education	Statutory guidance setting out schools and colleges’ duties to safeguard and promote the welfare of children.
LA	Local authority	A local government agency responsible for the provision of a range of services in a specified local area, including education.
LAC	Looked-after children	Children who have been placed in local authority care or where children’s services have looked after children for more than a period of 24 hours.
LGBTQ+	Lesbian, gay, bisexual, transgender and queer plus	Term relating to a community of people, protected by the Equality Act 2010, who identify as lesbian, gay, bisexual or transgender, or other protected sexual or gender identities.
[Academies] MAT	Multi-academy trust	A trust established to undertake strategic collaboration and provide education across a number of schools
NPCC	The National Police Chiefs’ Council	The National Police Chiefs’ Council is a national coordination body for law enforcement in the United

		Kingdom and the representative body for British police chief officers.
PLAC	Previously looked-after children	Children who were previously in local authority care or were looked after by children's services for more than a period of 24 hours. PLAC are also known as care leavers.
PSHE	Personal, social and health education	A non-statutory subject in which pupils learn about themselves, other people, rights, responsibilities and relationships.
RSHE	Relationships, sex and health education	A compulsory subject from Year 7 for all pupils. Includes the teaching of sexual health, reproduction and sexuality, as well as promoting positive relationships.
SCR	Single central record	A statutory secure record of recruitment and identity checks for all permanent and temporary staff, proprietors, contractors, external coaches and instructors, and volunteers who attend the school in a non-visitor capacity.
SENCO	Special educational needs coordinator	A statutory role within all schools maintaining oversight and coordinating the implementation of the school's special educational needs policy and provision of education to pupils with special educational needs.
SLT	Senior leadership team	Staff members who have been delegated leadership responsibilities in a school.
TRA	Teaching Regulation Agency	An executive agency of the DfE with responsibility for the regulation of the teaching profession.
VSH	Virtual school head	Virtual school heads are in charge of promoting the educational achievement of all the children looked after by the local authority they work for, and all children who currently have, or previously had, a social worker.

Definitions

The terms “**children**” and “**child**” refer to anyone under the age of 18.

For the purposes of this policy, “**safeguarding and protecting the welfare of children**” is defined as:

- Protecting pupils from maltreatment.
- Preventing the impairment of pupils’ mental and physical health or development.
- Ensuring that pupils grow up in circumstances consistent with the provision of safe and effective care.
- Taking action to enable all pupils to have the best outcomes.

For the purposes of this policy, “**consent**” is defined as having the freedom and capacity to choose to engage in sexual activity. Consent may be given to one sort of sexual activity but not another, and can be withdrawn at any time during sexual activity and each time activity occurs. A person only consents to a sexual activity if they agree by choice to that activity, and has the freedom and capacity to make that choice. Children under the age of 13 can never consent to any sexual activity. The age of consent is 16.

For the purposes of this policy, “**sexual violence**” refers to the following offences as defined under the Sexual Offences Act 2003:

- **Rape:** A person (A) commits an offence of rape if they intentionally penetrate the vagina, anus or mouth of another person (B) with their penis, B does not consent to the penetration, and A does not reasonably believe that B consents.
- **Assault by penetration:** A person (A) commits an offence if they intentionally penetrate the vagina or anus of another person (B) with a part of their body or anything else, the penetration is sexual, B does not consent to the penetration, and A does not reasonably believe that B consents.
- **Sexual assault:** A person (A) commits an offence of sexual assault if they intentionally touch another person (B), the touching is sexual, B does not consent to the touching, and A does not reasonably believe that B consents.
- **Causing someone to engage in sexual activity without consent:** A person (A) commits an offence if they intentionally cause another person (B) to engage in an activity, the activity is sexual, B does not consent to engaging in the activity, and A does not reasonably believe that B consents. This could include forcing someone to strip, touch themselves sexually, or to engage in sexual activity with a third party.

For the purposes of this policy, “**sexual harassment**” refers to unwanted conduct of a sexual nature that occurs online or offline, inside or outside of school. Sexual harassment is likely to violate a pupil’s dignity, make them feel intimidated, degraded or humiliated, and create a hostile, offensive, or sexualised environment. If left unchallenged, sexual harassment can create an atmosphere that normalises inappropriate behaviour and may lead to sexual violence. Sexual harassment can include, but is not limited to:

- Sexual comments, such as sexual stories, lewd comments, sexual remarks about clothes and appearance, and sexualised name-calling.
- Sexual “jokes” and taunting.
- Physical behaviour, such as deliberately brushing against someone, interfering with someone’s clothes, and displaying images of a sexual nature.

- Online sexual harassment, which may be standalone or part of a wider pattern of sexual harassment and/or sexual violence. This includes:
 - The consensual and non-consensual sharing of nude and semi-nude images and/or videos.
 - Sharing unwanted explicit content.
 - Upskirting.
 - Sexualised online bullying.
 - Unwanted sexual comments and messages, including on social media.
 - Sexual exploitation, coercion, and threats.

For the purposes of this policy, **“upskirting”** refers to the act, as identified the Voyeurism (Offences) Act 2019, of taking a picture or video under another person’s clothing, without their knowledge or consent, with the intention of viewing that person’s genitals or buttocks, with or without clothing, to obtain sexual gratification, or cause the victim humiliation, distress or alarm. Upskirting is a criminal offence. Anyone, including pupils and staff, of any gender can be a victim of upskirting.

For the purposes of this policy, the **“consensual and non-consensual sharing of nude and semi-nude images and/or videos”**, colloquially known as **“sexting”**, is defined as the sharing between pupils of sexually explicit content, including indecent imagery. For the purposes of this policy, **“indecent imagery”** is defined as an image which meets one or more of the following criteria:

- Nude or semi-nude sexual posing
- A child touching themselves in a sexual way
- Any sexual activity involving a child
- Someone hurting a child sexually
- Sexual activity that involves animals

1. Legal framework

This policy has due regard to all relevant legislation and statutory guidance including, but not limited to, the following:

Legislation

- Children Act 1989
- Children Act 2004
- Safeguarding Vulnerable Groups Act 2006
- The Education (School Teachers' Appraisal) (England) Regulations 2012 (as amended)
- Sexual Offences Act 2003
- Female Genital Mutilation Act 2003 (as inserted by the Serious Crime Act 2015)
- Apprenticeships, Children and Learning Act 2009
- Equality Act 2010
- Counter-Terrorism and Security Act 2015
- The UK General Data Protection Regulation (UK GDPR)
- Data Protection Act 2018
- **[Schools providing education to pupils under the age of eight only]** The Childcare (Disqualification) and Childcare (Early Years Provision Free of Charge) (Extended Entitlement) (Amendment) Regulations 2018
- Voyeurism (Offences) Act 2019
- Domestic Abuse Act 2021

Statutory guidance

- DfE (2015) 'The Prevent duty'
- DfE (2018) 'Working Together to Safeguard Children'
- DfE (2018) 'Disqualification under the Childcare Act 2006'
- DfE (2022) 'Keeping children safe in education 2022'
- HM Government (2020) 'Multi-agency statutory guidance on female genital mutilation'
- HM Government (2021) 'Channel Duty Guidance: Protecting people vulnerable to being drawn into terrorism'
- Home Office and Foreign, Commonwealth and Development Office (2022) 'Multi-agency statutory guidance for dealing with forced marriage and Multi-agency practice guidelines: Handling cases of forced marriage'

Non-statutory guidance

- DfE (2015) 'What to do if you're worried a child is being abused'
- DfE (2017) 'Child sexual exploitation'
- DfE (2018) 'Information sharing'
- DfE (2020) 'Sharing nudes and semi-nudes: advice for education settings working with children and young people'
- DfE (2021) 'Teachers' Standards'
- DfE (2022) 'Recruit teachers from overseas'
- Department of Health and Social Care (2022) 'Virginity testing and hymenoplasty: multi-agency guidance'

This policy operates in conjunction with the following school policies:

- Children Missing Education Policy
- Child Sexual Exploitation (CSE) Policy
- Prevent Duty Policy
- Child-on-child Abuse Policy
- Anti-bullying Policy
- Suspension and Exclusion Policy
- Online Safety Policy
- Cyber-security Policy
- Pupils' Personal Electronic Devices Policy
- Staff ICT and Electronic Devices Policy
- Data Protection Policy
- Photography Policy
- Records Management Policy
- LAC Policy
- Whistleblowing Policy
- Allegations of Abuse Against Staff Policy
- Low-level Safeguarding Concerns Policy
- Safer Recruitment Policy
- Staff Code of Conduct
- Behaviour Policy

2. Roles and responsibilities

All staff have a responsibility to:

- Consider, at all times, what is in the best interests of the pupil.
- Maintain an attitude of 'it could happen here' where safeguarding is concerned.
- Provide a safe environment in which pupils can learn.
- Be prepared to identify pupils who may benefit from early help.
- Be aware of the school's systems which support safeguarding, including any policies, procedures, information and training provided upon induction.
- Be aware of the role and identity of the DSL and deputy DSLs.
- Undertake safeguarding training, including online safety training, during their induction – this will be regularly updated.
- Receive and understand child protection and safeguarding (including online safety) updates, e.g. via email, as required, and at least annually.
- Be aware of the local early help process and understand their role in it.
- Be aware of, and understand, the process for making referrals to CSCS, as well as for making statutory assessments under the Children Act 1989 and their role in these assessments.
- Make a referral to CSCS and/or the police immediately, if at any point there is a risk of immediate serious harm to a child.
- Support social workers in making decisions about individual children, in collaboration with the DSL.

- Be aware of and understand the procedure to follow in the event that a child confides they are being abused, exploited or neglected.
- Be aware that a pupil may not feel ready or know how to tell someone that they are being abused, exploited or neglected, and/or may not recognise their experiences as harmful.
- Maintain appropriate levels of confidentiality when dealing with individual cases.
- Reassure victims that they are being taken seriously, that they will be supported, and that they will be kept safe.
- Speak to the DSL if they are unsure about how to handle safeguarding matters.
- Be aware of safeguarding issues that can put pupils at risk of harm.
- Be aware of behaviours that could potentially be a sign that a pupil may be at risk of harm.

Teachers, including the headteacher, have a responsibility to:

- Safeguard pupils' wellbeing and maintain public trust in the teaching profession as part of their professional duties, as outlined in the 'Teachers' Standards'.

The governing board has a duty to:

- Take strategic leadership responsibility for the school's safeguarding arrangements.
- Ensure that the school complies with its duties under the above child protection and safeguarding legislation.
- Guarantee that the policies, procedures and training opportunities in the school are effective and comply with the law at all times.
- Guarantee that the school contributes to multi-agency working in line with the statutory guidance '[Working Together to Safeguard Children](#)'.
- Confirm that the school's safeguarding arrangements take into account the procedures and practices of the LA as part of the inter-agency safeguarding procedures.
- Understand the local criteria for action and the local protocol for assessment, and ensure these are reflected in the school's policies and procedures.
- Comply with its obligations under section 14B of the Children Act 2004 to supply the local safeguarding arrangements with information to fulfil its functions.
- Ensure that staff working directly with children read at least Part one of KCSIE.
- Ensure that staff who do not work directly with children read either Part one or Annex A of KCSIE. **NB:** Individual schools assess which guidance will be most effective for their staff to safeguard and promote the welfare of children.
- Ensure that mechanisms are in place to assist staff to understand and discharge their role and responsibilities in regard to safeguarding children.
- Ensure a senior board level lead takes leadership responsibility for safeguarding arrangements.
- Appoint a member of staff from the SLT to the role of DSL as an explicit part of the role-holder's job description.
- Appoint one or more deputy DSLs to provide support to the DSL, and ensure that they are trained to the same standard as the DSL and that the role is explicit in their job descriptions.

- Facilitate a whole-school approach to safeguarding; this includes ensuring that safeguarding and child protection are at the forefront and underpin all relevant aspects of process and policy development.
- Where there is a safeguarding concern, ensure the child's wishes and feelings are taken into account when determining what action to take and what services to provide.
- Ensure systems are in place, children to confidently report abuse, knowing that their concerns will be treated seriously, and they can safely express their views and give feedback; these systems will be well-promoted, easily understood, and easily accessible.
- Ensure that staff have due regard to relevant data protection principles that allow them to share and withhold personal information.
- Ensure that a member of the governing board is nominated to liaise with the LA and/or partner agencies on issues of child protection and in the event of allegations of abuse made against the headteacher or another governor.
- Guarantee that there are effective and appropriate policies and procedures in place.
- Ensure all relevant persons are aware of the school's local safeguarding arrangements, including the governing board itself, the SLT and DSL.
- Make sure that pupils are taught about safeguarding, including protection against dangers online (including when they are online at home), through teaching and learning opportunities, as part of providing a broad and balanced curriculum.
- Adhere to statutory responsibilities by conducting pre-employment checks on staff who work with children, taking proportionate decisions on whether to ask for any checks beyond what is required.
- Ensure that staff are appropriately trained to support pupils to be themselves at school, e.g. if they are LGBTQ+.
- Ensure the school has clear systems and processes in place for identifying possible mental health problems in pupils, including clear routes to escalate concerns and clear referral and accountability systems.
- Guarantee that volunteers are appropriately supervised.
- Make sure that at least one person on any appointment panel has undertaken safer recruitment training.
- Ensure that all staff receive safeguarding and child protection training updates, e.g. emails, as required, but at least annually.
- Ensure that all governors receive appropriate safeguarding and child protection training upon their induction and that this training is updated regularly.
- Certify that there are procedures in place to handle allegations against staff, supply staff, volunteers and contractors.
- Confirm that there are procedures in place to make a referral to the DBS and the Teaching Regulation Agency (TRA), where appropriate, if a person in regulated activity has been dismissed or removed due to safeguarding concerns or would have been had they not resigned.
- Guarantee that there are procedures in place to handle pupils' allegations against other pupils.
- Ensure that appropriate disciplinary procedures are in place, as well as policies pertaining to the behaviour of pupils and staff.
- Ensure that procedures are in place to eliminate unlawful discrimination, harassment and victimisation, including those in relation to child-on-child abuse.

- Guarantee that there are systems in place for pupils to express their views and give feedback.
- Establish an early help procedure and ensure all staff understand the procedure and their role in it.
- Appoint a designated teacher to promote the educational achievement of LAC and ensure that this person has undergone appropriate training.
- Ensure that the designated teacher works with the VSH to discuss how the pupil premium funding can best be used to support LAC.
- Introduce mechanisms to assist staff in understanding and discharging their roles and responsibilities.
- Make sure that staff members have the skills, knowledge and understanding necessary to keep LAC safe, particularly with regard to the pupil's legal status, contact details and care arrangements.
- Put in place appropriate safeguarding responses for pupils who go missing from school, particularly on repeat occasions, to help identify any risk of abuse, neglect or exploitation, and prevent the risk of their disappearance in future.
- Ensure that all members of the governing board have been subject to an enhanced DBS check.
- Create a culture where staff are confident to challenge senior leaders over any safeguarding concerns.
- Be aware of their obligations under the Human Rights Act 1998, the Equality Act 2010 (including the Public Sector Equality Duty), Data Protection Act 2018, the UK GDPR and the local multi-agency safeguarding arrangements.

The headteacher has a duty to:

- Ensure that the policies and procedures adopted by the governing board, particularly concerning referrals of cases of suspected abuse and neglect, are followed by staff.
- Provide staff with the appropriate policies and information upon induction.

The DSL has a duty to:

- Take lead responsibility for safeguarding and child protection, including online safety.
- Provide advice and support to other staff on child welfare, safeguarding and child protection matters.
- Take part in strategy discussions and inter-agency meetings, and/or support other staff to do so.
- Contribute to the assessment of children, and/or support other staff to do so.
- During term time, be available during school hours for staff to discuss any safeguarding concerns. **NB:** Individual schools, working with the DSL, define what “available” means and whether, in exceptional circumstances, availability via phone, videocall, or other media is an acceptable substitution for in-person availability.
- Arrange, alongside the school, adequate and appropriate cover for any activities outside of school hours or terms.
- Refer cases:
 - To CSCS where abuse and neglect are suspected, and support staff who make referrals to CSCS.

- To the Channel programme where radicalisation concerns arise, and support staff who make referrals to the Channel programme.
 - To the DBS where a person is dismissed or has left due to harm, or risk of harm, to a child.
 - To the police where a crime may have been committed, in line with the National Police Chiefs' Council (NPCC) guidance.
- Act as a source of support, advice and expertise for all staff.
- Act as a point of contact with the safeguarding partners.
- Liaise with the headteacher to inform them of issues, especially regarding ongoing enquiries under section 47 of the Children Act 1989 and police investigations.
- Liaise with the deputy DSLs to ensure effective safeguarding outcomes.
- Liaise with the case manager and the LA designated officers (LADOs) for child protection concerns in cases concerning staff.
- Liaise with staff on matters of safety, safeguarding and welfare, including online and digital safety.
- Liaise with staff when deciding whether to make a referral by liaising with relevant agencies so that children's needs are considered holistically.
- Liaise with the senior mental health lead and, where available, the mental health support team, where safeguarding concerns are linked to mental health.
- Promote supportive engagement with parents in safeguarding and promoting the welfare of children, including where families may be facing challenging circumstances.
- Work with the headteacher and relevant strategic leads, taking lead responsibility for promoting educational outcomes by knowing the welfare, safeguarding and child protection issues that children in need are experiencing, or have experienced, and identifying the impact that these issues might be having on their attendance, engagement and achievement at school. This includes:
 - Ensuring that the school knows which pupils have or had a social worker.
 - Understanding the academic progress and attainment of these pupils.
 - Maintaining a culture of high aspirations for these pupils.
 - Supporting teachers to provide additional academic support or reasonable adjustments to help these pupils reach their potential.
 - Helping to promote educational outcomes by sharing the information about the welfare, safeguarding and child protection issues these pupils are experiencing with teachers and the SLT.
- Ensure that child protection files are kept up-to-date and only accessed by those who need to do so.
- Ensure that a pupil's child protection file is transferred as soon as possible, and within five days, when transferring to a new school, and consider any additional information that should be shared.
- Ensure each member of staff has access to and understands the school's Child Protection and Safeguarding Policy and procedures – this will be discussed during the staff induction process.
- Work with the governing board to ensure the school's Child Protection and Safeguarding Policy is reviewed annually, and the procedures are updated and reviewed regularly.

- Ensure the school's Child Protection and Safeguarding Policy is available publicly, and parents are aware that the school may make referrals for suspected cases of abuse or neglect, as well as the role the school plays in these referrals.
- Link with safeguarding partner arrangements to make sure that staff are aware of the training opportunities available and the latest local policies on safeguarding.
- Undergo training, and update this training at least every two years.
- Obtain access to resources and attend any relevant or refresher training courses.
- Encourage a culture of listening to children and taking account of their wishes and feelings; this includes understanding the difficulties pupils may have in approaching staff about their circumstances and considering how to build trusted relationships that facilitate communication.
- Support and advise staff and help them feel confident on welfare, safeguarding and child protection matters: specifically, to ensure that staff are supported during the referrals processes; and to support staff to consider how safeguarding, welfare and educational outcomes are linked, including to inform the provision of academic and pastoral support.
- Understand the importance of information sharing, including within school, with other schools, and with the safeguarding partners, other agencies, organisations and practitioners.
- Understand relevant data protection legislation and regulations, especially the Data Protection Act 2018 and the UK GDPR.
- Keep detailed, accurate, secure written records of concerns and referrals, and understand the purpose of this record-keeping.

The designated teacher has a responsibility for promoting the educational achievement of LAC and PLAC, and for children who have left care through adoption, special guardianship or child arrangement orders or who were adopted from state care outside England and Wales.

3. Multi-agency working

The school contributes to multi-agency working as part of its statutory duty. The school is aware of and will follow the local safeguarding arrangements.

The school will be fully engaged, involved, and included in local safeguarding arrangements. Once the school is named as a relevant agency by local safeguarding partners, it will follow its statutory duty to cooperate with the published arrangements in the same way as other relevant agencies. The school will act in accordance with the safeguarding arrangements.

The school will work with CSCS, the police, health services and other services to protect the welfare of its pupils, through the early help process and by contributing to multi-agency plans to provide additional support.

Where a need for early help is identified, the school will allow access for CSCS from the host LA and, where appropriate, a placing LA, for that LA to conduct (or consider whether to conduct) a section 17 or 47 assessment.

The school also recognises the particular importance of inter-agency working in identifying and preventing CSE.

Information sharing

The school recognises the importance of proactive information sharing between professionals and local agencies in order to effectively meet pupils' needs and identify any need for early help.

Considering the above, staff will be aware that whilst the UK GDPR and the Data Protection Act 2018 place a duty on schools to process personal information fairly and lawfully, they also allow for information to be stored and shared for safeguarding purposes – data protection regulations do not act as a barrier to sharing information where failure to do so would result in the pupil being placed at risk of harm.

Staff members will ensure that fear of sharing information does not stand in the way of their responsibility to promote the welfare and safety of pupils. If staff members are in doubt about sharing information, they will speak to the DSL or deputy DSLs.

4. Early Help

Early help means providing support as soon as a problem emerges, at any point in a child's life. Any pupil may benefit from early help, but in particular, staff will be alert to the potential need for early help for pupils who:

- Are disabled, have certain health conditions, or have specific additional needs.
- Have SEND, regardless of whether they have a statutory EHC plan.
- Have mental health needs.
- Are young carers.
- Show signs of being drawn into anti-social or criminal behaviour, including gang involvement and association with organised crime groups or county lines.
- Are frequently missing or going missing from care or from home.
- Are at risk of modern slavery, trafficking, or sexual or criminal exploitation.
- Are at risk of being radicalised or exploited.
- Have family members in prison, or are affected by parental offending.
- Are in a family circumstance presenting challenges for them, such as drug and alcohol misuse, adult mental health problems, or domestic abuse.
- Misuse drugs or alcohol.
- Have returned home to their family from care.
- Are at risk of HBA, such as FGM or forced marriage.
- Are privately fostered.
- Are persistently absent from education, including persistent absences for part of the school day.
- Show early signs of abuse and/or neglect in other ways.

The DSL will take the lead where early help is appropriate. This includes liaising with other agencies and setting up an inter-agency assessment as appropriate. The local early help process will be followed as required.

Staff may be required to support other agencies and professionals in an early help assessment, in some cases acting as the lead practitioner. Any such cases will be kept under

constant review and consideration given to a referral to CSCS for assessment for statutory services if the pupil's situation is not improving or is worsening.

5. Abuse and Neglect

For the purposes of this policy, “**abuse**” is defined as a form of maltreatment of a child which involves inflicting harm or failing to act to prevent harm. Harm can include ill treatment that is not physical as well as the impact of witnessing the ill treatment of others – this can be particularly relevant, for example, in relation to the impact on children of all forms of domestic abuse. Children may be abused in a family, institutional or community setting by those known to them or by others, e.g. via the internet. Abuse can take place wholly online, or technology may be used to facilitate offline abuse. Children may be abused by one or multiple adults or other children.

For the purposes of this policy, “**physical abuse**” is defined as a form of abuse which may involve actions such as hitting, shaking, throwing, poisoning, burning or scalding, drowning, suffocating, or otherwise causing physical harm to a child. Physical abuse can also be caused when a parent fabricates the symptoms of, or deliberately induces, illness in a child.

For the purposes of this policy, “**emotional abuse**” is defined as the persistent emotional maltreatment of a child such as to cause severe and adverse effects on the child's emotional development. This may involve conveying to a child that they are worthless, unloved, inadequate, or valued only insofar as they meet the needs of another person. It may include not giving the child the opportunities to express their views, deliberately silencing them, ‘making fun’ of what they say or how they communicate. It may feature age or developmentally inappropriate expectations being imposed on children, such as interactions that are beyond their developmental capability, overprotection and limitation of exploration and learning, or preventing the child from participating in normal social interaction. It may involve seeing or hearing the ill-treatment of another. It may involve serious bullying, including cyberbullying, causing the child to frequently feel frightened or in danger, or the exploitation or corruption of children. Some level of emotional abuse is involved in all types of maltreatment of a child, but it may also occur alone.

For the purposes of this policy, “**sexual abuse**” is defined as abuse that involves forcing or enticing a child to take part in sexual activities, not necessarily involving violence, and regardless of whether the child is aware of what is happening. This may involve physical contact, including assault by penetration, or non-penetrative acts, such as masturbation, kissing, rubbing, and touching outside of clothing. It may also include non-contact activities, such as involving children in looking at, or in the production of, sexual images, encouraging children to behave in sexually inappropriate ways, or grooming a child in preparation for abuse. Sexual abuse can be perpetrated by people of any gender and age.

For the purposes of this policy, “**neglect**” is defined as the persistent failure to meet a child's basic physical and/or psychological needs, likely to result in serious impairment of a child's health or development. This may involve a parent or carer failing to provide a child with adequate food, clothing or shelter (including exclusion from home or abandonment); failing to protect a child from physical or emotional harm or danger; failing to ensure adequate supervision (including through the use of inappropriate caregivers); or failing to ensure access

to appropriate medical care or treatment. It may also include neglect of, or unresponsiveness to, a child's basic emotional needs.

■ All staff will be aware of the indicators of abuse and neglect and understand that children can be at risk of harm inside and outside of the school, inside and outside of home, and online. All staff will be aware that abuse, neglect and other safeguarding issues are rarely standalone events that can be given a specific label, and multiple issues often overlap one another; therefore, staff will be vigilant and always raise concerns with the DSL. All staff, especially the DSL and deputy DSLs, will be aware that safeguarding incidents and/or behaviours can be associated with factors outside the school and/or can occur between children outside of these environments; this includes being aware that pupils can be at risk of abuse or exploitation in situations outside their families (extra-familial harms). All staff will be aware of the appropriate action to take following a pupil being identified as at potential risk of abuse and, in all cases, will speak to the DSL if they are unsure.

All staff will be aware that technology is a significant component in many safeguarding and wellbeing issues, including online abuse, cyberbullying, and the sharing of indecent images

6. Specific Safeguarding Issues

There are certain specific safeguarding issues that can put children at risk of harm – staff will be aware of these issues.

[Appendix A](#) of this policy sets out details about specific safeguarding issues that pupils may experience and outlines specific actions that would be taken in relation to individual issues.

7. Child-on-Child Abuse

[In line with KCSIE 2022, references to 'peer-on-peer abuse' have been changed to 'child-on-child abuse.]

For the purposes of this policy, **“child-on-child abuse”** is defined as abuse between children.

The school has a zero-tolerance approach to abuse, including child-on-child abuse, as confirmed in the Child Protection and Safeguarding Policy's [statement of intent](#).

All staff will be aware that child-on-child abuse can occur between pupils of any age and gender, both inside and outside of school, as well as online. All staff will be aware of the indicators of child-on-child abuse, how to identify it, and how to respond to reports. All staff will also recognise that even if no cases have been reported, this is not an indicator that child-on-child abuse is not occurring. All staff will speak to the DSL if they have any concerns about child-on-child abuse.

All staff will understand the importance of challenge inappropriate behaviour between peers, and will not tolerate abuse as “banter” or “part of growing up”.

Child-on-child abuse can be manifested in many different ways, including:

- Bullying, including cyberbullying and prejudice-based or discriminatory bullying.

- Abuse in intimate personal relationships between peers – sometimes known as ‘teenage relationship abuse’.
- Physical abuse – this may include an online element which facilitates, threatens and/or encourages physical abuse.
- Sexual violence – this may include an online element which facilitates, threatens and/or encourages sexual violence.
- Sexual harassment, including online sexual harassment, which may be standalone or part of a broader pattern of abuse.
- Causing someone to engage in sexual activity without consent.
- The consensual and non-consensual sharing of nude and semi-nude images and/or videos.
- Upskirting.
- Initiation- and hazing-type violence and rituals, which can include activities involving harassment, abuse or humiliation used as a way of initiating a person into a group, and may also include an online element.

All staff will be clear as to the school’s policy and procedures regarding child-on-child abuse and the role they have to play in preventing it and responding where they believe a child may be at risk from it.

Pupils will be made aware of how to raise concerns or make a report and how any reports will be handled. This includes the process for reporting concerns about friends or peers. Pupils will also be reassured that they will be taken seriously, be supported, and kept safe.

The school’s procedures for managing allegations of child-on-child abuse are outlined in the Child-on-child Abuse Policy. Staff will follow these procedures, as well as the procedures outlined in the school’s Anti-bullying Policy and Suspension and Exclusion Policy, where relevant.

8. Online safety and personal electronic devices

The school will adhere to the Online Safety Policy at all times.

As part of a broad and balanced curriculum, all pupils will be made aware of online risks and taught how to stay safe online.

Through training, all staff members will be made aware of:

- Pupil attitudes and behaviours which may indicate they are at risk of potential harm online.
- The procedure to follow when they have a concern regarding a pupil’s online activity.

The school will ensure that suitable filtering systems are in place on ICT equipment to prevent children accessing inappropriate material, in accordance with the school’s Cyber-security Policy. The school will, however, ensure that the use of filtering and monitoring systems does not cause “over blocking”, which may lead to unreasonable restrictions as to what pupils can be taught online.

Staff will be aware of the filtering systems in place and will know how to escalate concerns where they are identified.

Further information regarding the school's approach to online safety can be found in the Online Safety Policy.

Communicating with parents

As part of the usual communication with parents, the school will reinforce the importance of pupils being safe online and inform parents that they will find it helpful to understand what systems the school uses to filter and monitor online use.

The school will also make it clear to parents what their children are being asked to do online for school.

Reviewing online safety

The school will carry out an annual review of its approach to online safety, supported by an annual risk assessment that considers and reflects the risks faced by pupils.

Personal electronic devices

The use of personal electronic devices, including mobile phones and cameras, by staff and pupils is closely monitored by the school, in accordance with the Staff ICT and Electronic Devices Policy and Pupils' Personal Electronic Devices Policy.

Photographs and videos of pupils will be carefully planned before any activity with particular regard to consent and adhering to the school's Data Protection Policy and Photography Policy. The DPO will oversee the planning of any events where photographs and videos will be taken.

Where photographs and videos will involve pupils who are LAC, adopted pupils, or pupils for whom there are security concerns, the headteacher will liaise with the DSL to determine the steps involved. The DSL will, in known cases of pupils who are LAC or who have been adopted, liaise with the pupils' social workers, carers or adoptive parents to assess the needs and risks associated with the pupils.

Staff will report any concerns about pupils' or other staff members' use of personal electronic devices to the DSL, following the appropriate procedures.

Upskirting

Under the Voyeurism (Offences) Act 2019, it is an offence to operate equipment for the purpose of upskirting. **"Operating equipment"** includes enabling, or securing, activation by another person without that person's knowledge, e.g. a motion-activated camera.

Upskirting will not be tolerated by the school. Any incidents of upskirting will be reported to the DSL, who will then decide on the next steps to take, which may include police involvement.

9. Consensual and non-consensual sharing of indecent images and videos

The school will ensure that staff are aware to treat the consensual and non-consensual sharing of nude and semi-nude images and/or videos (also known as sexting or youth produced sexual images) as a safeguarding concern.

Staff will receive appropriate training regarding child sexual development and will understand the difference between sexual behaviour that is considered normal and expected for the age

of the pupil, and sexual behaviour that is inappropriate and harmful. Staff will receive appropriate training around how to deal with instances of sharing nudes and semi-nudes in the school community, including understanding motivations, assessing risks posed to pupils depicted in the images, and how and when to report instances of this behaviour.

Staff will be aware that creating, possessing, and distributing indecent imagery of children is a criminal offence, regardless of whether the imagery is created, possessed, and distributed by the individual depicted; however, staff will ensure that pupils are not unnecessarily criminalised.

Where a member of staff becomes aware of an incidence of sharing nudes and/or semi-nudes, they will refer this to the DSL as soon as possible.

The school's full response to incidents of consensual and non-consensual sharing of indecent images and videos can be found in the Youth-produced Sexual Imagery Policy.

10. Context of Safeguarding issues

Safeguarding incidents can occur outside of school and can be associated with outside factors. All staff, particularly the DSL and deputy DSLs, will always consider the context of safeguarding incidents. Assessment of pupils' behaviour will consider whether there are wider environmental factors that are a threat to their safety and/or welfare. The school will provide as much contextual information as possible when making referrals to CSCS.

11. Pupils potentially at risk of greater harm

The school recognises that some groups of pupils can face additional safeguarding challenges, and understands that further barriers may exist when determining abuse and neglect in these groups of pupils. Additional considerations for managing safeguarding concerns and incidents amongst these groups are outline below.

Pupils who need social workers

Pupils may need social workers due to safeguarding or welfare needs. These needs can leave pupils vulnerable to further harm and educational disadvantage.

As a matter of routine, the DSL will hold and use information from the LA about whether a pupil has a social worker in order to make decisions in the best interests of the pupil's safety, welfare, and educational outcomes.

Where a pupil needs a social worker, this will inform decisions about safeguarding, e.g. responding to unauthorised absence, and promoting welfare, e.g. considering the provision pastoral or academic support.

Home-educated children

Parents may choose elective home education (EHE) for their children. In some cases, EHE can mean that children are less visible to the services needed to safeguard and support them.

In line with the Education (Pupil Registration) (England) Regulations 2006, the school will inform the LA of all deletions from the admissions register when a pupil is taken off roll.

Where a parent has expressed their intention to remove a pupil from school for EHE, the school, in collaboration with the LA and other key professionals, will coordinate a meeting with the parent, where possible, before the final decision has been made, particularly if the pupil has SEND, is vulnerable, and/or has a social worker.

LAC and PLAC

Children most commonly become looked after because of abuse and/or neglect. Because of this, they can be at potentially greater risk in relation to safeguarding. PLAC, also known as care leavers, can also remain vulnerable after leaving care.

The governing board will ensure that staff have the skills, knowledge and understanding to keep LAC and PLAC safe. This includes ensuring that the appropriate staff have the information they need, such as:

- Looked after legal status, i.e. whether they are looked after under voluntary arrangements with consent of parents, or on an interim or full care order.
- Contact arrangements with parents or those with parental responsibility.
- Care arrangements and the levels of authority delegated to the carer by the authority looking after the pupil.

The DSL will be provided with the necessary details of pupils' social workers and the VSH, and, for PLAC, personal advisers.

Further details of safeguarding procedures for LAC and PLAC are outlined in the school's LAC Policy.

Pupils with SEND

When managing safeguarding in relation to pupils with SEND, staff will be aware of the following:

- Certain indicators of abuse, such as behaviour, mood and injury, may relate to the pupil's disability without further exploration; however, it should never be assumed that a pupil's indicators relate only to their disability
- Pupils with SEND can be disproportionately impacted by issues such as bullying, without outwardly showing any signs
- Communication barriers may exist, as well as difficulties in overcoming these barriers

When reporting concerns or making referrals for pupils with SEND, the above factors will always be taken into consideration. When managing a safeguarding issue relating to a pupil with SEND, the DSL will liaise with the school's SENCO, as well as the pupil's parents where appropriate, to ensure that the pupil's needs are met effectively.

LGBTQ+ pupils

The fact that a pupil may be LGBTQ+ is not in itself an inherent risk factor for harm; however, staff will be aware that LGBTQ+ pupils can be targeted by other individuals. Staff will also be aware that, in some cases, a pupil who is perceived by others to be LGBTQ+ (whether they are or not) can be just as vulnerable as pupils who identify as LGBTQ+.

Staff will also be aware that the risks to these pupils can be compounded when they do not have a trusted adult with whom they can speak openly with. Staff will endeavour to reduce the

additional barriers faced by these pupils and provide a safe space for them to speak out and share any concerns they have.

Pupils requiring mental health support

All staff will be made aware that mental health problems can, in some cases, be an indicator that a pupil has suffered, or is at risk of suffering, abuse, neglect or exploitation.

12. Use of the school premises for non-school activities

Where the governing board hires or rents out school facilities or the school premises to organisations or individuals, e.g. for providers to run community or extracurricular activities, it will ensure that appropriate arrangements are in place to keep pupils safe.

Where the governing board provides the activities under the direct supervision or management of school staff, child protection arrangements will apply. Where activities are provided separately by another body, this may not be the case; therefore, the governing board will seek assurance that the body concerned has appropriate safeguarding and child protection policies and procedures in place, including inspecting these as needed. The governing board will also ensure that there are arrangements in place to liaise with the school on these matters where appropriate. The governing board will ensure safeguarding requirements are included in any transfer of control agreement, i.e. a lease or hire agreement, as a condition of use and occupation of the premises, and specify that failure to comply with this would lead to termination of the agreement.

Extracurricular activities and clubs

External bodies that host extracurricular activities and clubs at the school, e.g. charities or companies, will work in collaboration with the school to effectively safeguard pupils and adhere to local safeguarding arrangements.

Staff and volunteers running extracurricular activities and clubs are aware of their safeguarding responsibilities and promote the welfare of pupils. Paid and volunteer staff understand how they should respond to child protection concerns and how to make a referral to CSCS or the police, if necessary.

All national governing bodies of sport that receive funding from either Sport England or UK Sport must aim to meet the Standards for Safeguarding and Protecting Children in Sport.

13. Alternative Provision

The school will remain responsible for a pupil's welfare during their time at an alternative provider. When placing a pupil with an alternative provider, the school will obtain written confirmation that the provider has conducted all relevant safeguarding checks on staff.

14. Work Experience

When a pupil is sent on work experience, the school will ensure that the provider has appropriate safeguarding policies and procedures in place. Where the school has pupils conduct work experience at the school, an enhanced DBS check will be obtained if the pupil is over the age of 16.

15. Homestay exchange visits

School-arranged homestays in UK

Where the school is arranging for a visiting child to be provided with care and accommodation in the UK in the home of a family to which the child is not related, the responsible adults are considered to be in regulated activity for the period of the stay. In such cases, the school is the regulated activity provider; therefore, the school will obtain all the necessary information required, including a DBS enhanced certificate with barred list information, to inform its assessment of the suitability of the responsible adults.

Where criminal record information is disclosed, the school will consider, alongside all other information, whether the adult is a suitable host. In addition to the responsible adults, the school will consider whether a DBS enhanced certificate should be obtained for anyone else aged over 16 in the household.

School-arranged homestays abroad

The school will liaise with partner schools to discuss and agree the arrangements in place for the visit. The school will consider, on a case-by-case basis, whether to contact the relevant foreign embassy or High Commission of the country in question to ascertain what checks may be possible in respect of those providing homestay outside of the UK. The school will use its professional judgement to assess whether the arrangements are appropriate and sufficient to safeguard every child involved in the exchange. Pupils will be provided with emergency contact details to use where an emergency occurs or a situation arises that makes them feel uncomfortable.

Privately arranged homestays

Where a parent or pupil arranges their own homestay, this is a private arrangement and the school is not the regulated activity provider.

Private fostering

Where a period of UK homestay lasts 28 days or more for a child aged under 16, or under 18 for a child with SEND, this may amount to private fostering under the Children Act 1989. Where the school becomes aware of a pupil being privately fostered, they will notify the LA as soon as possible to allow the LA to conduct any necessary checks.

16. Pupils with family members in prison

- 16.1 Pupils with a family member in prison will be offered pastoral support as necessary.
- 16.2 They will be allowed the opportunity to discuss questions and concerns.

17. Pupils required to give evidence in court

- 17.1 Pupils required to give evidence in criminal courts, either for crimes committed against them or crimes they have witnessed, will be offered appropriate pastoral support.
- 17.2 Primary age Pupils will also be provided with the booklet 'Going to Court' from HM Courts and Tribunals Service (HMCTS) where appropriate and allowed the opportunity to discuss questions and concerns.
- 17.3 Secondary age Pupils will also be provided with the booklet 'Going to Court and being a witness' from HMCTS where appropriate and allowed the opportunity to discuss questions and concerns.

18. Concerns about pupils

If a member of staff has any concern about a pupil's welfare, or a pupil has reported a safeguarding concern in relation to themselves or a peer, they will act on them immediately by speaking to the DSL or deputy DSLs.

Staff will be aware that pupils may not feel ready or know how to tell someone that they are being abused, exploited or neglected, and/or they may not recognise their experiences as harmful. Staff will be aware that this must not prevent them from having professional curiosity and speaking to the DSL, or deputy DSL, if they have a concern about a pupil.

All staff members are aware of the procedure for reporting concerns and understand their responsibilities in relation to confidentiality and information sharing, as outlined in the [communication and confidentiality](#) section of this policy.

Where the DSL is not available to discuss the concern with, staff members will contact the deputy DSLs with the matter. If a referral is made about a pupil by anyone other than the DSL, the DSL will be informed as soon as possible.

The LA will make a decision regarding what action is required within one working day of the referral being made and will notify the referrer. Staff are required to monitor a referral if they do not receive information from the LA regarding what action is necessary for the pupil. If the situation does not improve after a referral, the DSL will ask for reconsideration to ensure that their concerns have been addressed and that the situation improves for the pupil.

If early help is appropriate, the case will be kept under constant review. If the pupil's situation does not improve, a referral will be considered. All concerns, discussions and decisions made, as well as the reasons for making those decisions, will be recorded in writing by the DSL and kept securely in [location](#).

If a pupil is in immediate danger, a referral will be made to CSCS and/or the police immediately. If a pupil has committed a crime, such as sexual violence, the police will be notified without delay.

Where there are safeguarding concerns, the school will ensure that the pupil's wishes are always taken into account, and that there are systems available for pupils to provide feedback and express their views. When responding to safeguarding concerns, staff members will act calmly and supportively, ensuring that the pupil feels like they are being listened to and believed.

An inter-agency assessment will be undertaken where a child and their family could benefit from coordinated support from more than one agency. These assessments will identify what help the child and family require in preventing needs escalating to a point where intervention would be needed.

19. Managing Referrals

The reporting and referral process outlined in the Reporting Safeguarding Concerns Process Flowchart will be followed accordingly.

All staff members, in particular the DSL, will be aware of the LA's arrangements in place for managing referrals. The DSL will provide staff members with clarity and support where needed. When making a referral to CSCS or other external agencies, information will be shared in line with confidentiality requirements and will only be shared where necessary to do so.

The DSL will work alongside external agencies, maintaining continuous liaison, including multi-agency liaison where appropriate, in order to ensure the wellbeing of the pupils involved. The DSL will work closely with the police to ensure the school does not jeopardise any criminal proceedings, and to obtain help and support as necessary.

Where a pupil has been harmed or is in immediate danger or at risk of harm, the referrer will be notified of the action that will be taken within one working day of a referral being made.

Where this information is not forthcoming, the referrer will contact the assigned social worker for more information.

The school will not wait for the start or outcome of an investigation before protecting the victim and other pupils: this applies to criminal investigations as well as those made by CSCS. Where CSCS decide that a statutory investigation is not appropriate, the school will consider referring the incident again if it is believed that the pupil is at risk of harm. Where CSCS decide that a statutory investigation is not appropriate and the school agrees with this decision, the school will consider the use of other support mechanisms, such as early help and pastoral support.

At all stages of the reporting and referral process, the pupil will be informed of the decisions made, actions taken and reasons for doing so. Discussions of concerns with parents will only take place where this would not put the pupil or others at potential risk of harm. The school will work closely with parents to ensure that the pupil, as well as their family, understands the arrangements in place, such as in-school interventions, is effectively supported, and knows where they can access additional support.

20. Concerns about school's safeguarding practices

Any concerns regarding the safeguarding practices at the school will be raised with the SLT, and the necessary whistleblowing procedures will be followed, as outlined in the Whistleblowing Policy. If a staff member feels unable to raise an issue with the SLT, they should access other whistleblowing channels such as the NSPCC whistleblowing helpline (0800 028 0285).

21. Safeguarding concerns and allegations of abuse against staff

All allegations against staff, supply staff, volunteers and contractors will be managed in line with the school's Allegations of Abuse Against Staff Policy, a copy of which will be provided to, and understood by, all staff. The school will ensure all allegations against staff, including those who are not employees of the school, are dealt with appropriately and that the school liaises with the relevant parties.

When managing allegations against staff, the school will recognise the distinction between allegations that meet the harms threshold and allegations that do not, also known as "low-level concerns", as defined in the Allegations of Abuse Against Staff Policy. Allegations that meet the harms threshold include instances where staff have:

- Behaved in a way that has harmed a child, or may have harmed a child.
- Committed or possibly committed a criminal offence against or related to a child.
- Behaved towards a child in a way that indicates they may pose a risk of harm to children.
- Behaved, or may have behaved, in a way that indicates they may not be suitable to work with children.

Low-level concerns will be handled in line with the schools' Low-level Safeguarding Concerns Policy.

22. Communication and confidentiality

All child protection and safeguarding concerns will be treated in the strictest of confidence in accordance with school data protection policies.

Where there is an allegation or incident of sexual abuse or sexual violence, the victim is entitled to anonymity by law; therefore, the school will consult its policy and agree on what information will be disclosed to staff and others, in particular the alleged perpetrator and their parents. Where a report of sexual violence or sexual harassment is progressing through the criminal justice system, the school will do all it can to protect the anonymity of the pupils involved in the case.

Concerns will only be reported to those necessary for its progression and reports will only be shared amongst staff members and with external agencies on a need-to-know basis. During the disclosure of a concern by a pupil, staff members will not promise the pupil confidentiality and will ensure that they are aware of what information will be shared, with whom and why.

Where it is in the public interest, and protects pupils from harm, information can be lawfully shared without the victim's consent, e.g. if doing so would assist the prevention, detection or prosecution of a serious crime. Before doing so, the DSL will weigh the victim's wishes against their duty to protect the victim and others. Where a referral is made against the victim's wishes, it is done so carefully with the reasons for the referral explained to the victim and specialist support offered.

Depending on the nature of a concern, the DSL will discuss the concern with the parents of the pupils involved. Discussions with parents will not take place where they could potentially put a pupil at risk of harm. Discussion with the victim's parents will relate to the arrangements being put in place to safeguard the victim, with the aim of understanding their wishes in terms

of support arrangements and the progression of the report. Discussion with the alleged perpetrator's parents will have regards to the arrangements that will impact their child, such as moving classes, with the reasons behind decisions being explained and the available support discussed. External agencies will be invited to these discussions where necessary.

Where confidentiality or anonymity has been breached, the school will implement the appropriate disciplinary procedures as necessary and will analyse how damage can be minimised and future breaches be prevented.

Where a pupil is leaving the school, the DSL will consider whether it is appropriate to share any information with the pupil's new provider, in addition to the child protection file, that will allow the new provider to support the pupil and arrange appropriate support for their arrival.

23. Safer recruitment

The school's full policy and procedures for safer recruitment are outlined in the Safer Recruitment Policy.

An enhanced DBS check with barred list information will be undertaken for all staff members engaged in regulated activity. A person will be considered to be in 'regulated activity' if, as a result of their work, they:

- Are responsible on a daily basis for the care or supervision of children.
- Regularly work in the school at times when children are on the premises.
- Regularly come into contact with children under 18 years of age.

The DfE's [DBS Workforce Guides](#) will be consulted when determining whether a position fits the child workforce criteria.

The governing board will conduct the appropriate pre-employment checks for all prospective employees, including internal candidates and candidates who have lived or worked outside the UK.

The appropriate DBS and suitability checks will be carried out for all governors, volunteers, and contractors.

Staff suitability

All centres providing care for pupils under the age of eight must ensure that staff and volunteers working in these settings are not disqualified from doing so under the Childcare (Disqualification) and Childcare (Early Years Provision Free of Charge) (Extended Entitlement) (Amendment) Regulations 2018. A person may be disqualified if they:

- Have certain orders or other restrictions placed upon them.
- Have committed certain offences.

All staff members are required to sign the Staff Disqualification Declaration Form confirming that they are not disqualified from working in a schooling environment. A disqualified person will not be permitted to continue working at the school, unless they apply for and are granted a waiver from Ofsted. The school will provide support with this process.

Ongoing suitability

Following appointment, consideration will be given to staff and volunteers' ongoing suitability – to prevent the opportunity for harm to children or placing children at risk.

Referral to the DBS

The school will refer to the DBS anyone who has harmed a child or poses a risk of harm to a child, or if there is reason to believe the member of staff has committed an offence and has been removed from working in regulated activity. The duty will also apply in circumstances where an individual is deployed to another area of work that is not in regulated activity or they are suspended.

24. Single Central Record (SCR)

The school keeps an SCR which records all staff, including agency and third-party supply staff, and teacher trainees on salaried routes, who work at the school.

All members of the proprietor body are also recorded on the SCR.

[Alternative option for academies within a MAT] The MAT holds a central SCR containing information that is easily accessible and recorded in such a way that allows for details for each individual academy to be provided separately, and without delay, to all who need to see it, including Ofsted.

The following information is recorded on the SCR:

- An identity check
- A barred list check
- An enhanced DBS check
- A prohibition from teaching check
- A check of professional qualifications, where required
- A check to determine the individual's right to work in the UK
- Additional checks for those who have lived or worked outside of the UK
- **[Colleges only]** Whether the employee's position involves relevant activity, i.e. regularly caring for, training, supervising or being solely in charge of persons aged under 18
- **[Academies, free schools and independent schools only]** A section 128 check for those in management positions

For agency and third-party supply staff, the school will also record whether written confirmation from the employment business supplying the member of staff has been received which indicates that all the necessary checks have been conducted (i.e. all the same checks the school would perform on any individual working in the school or who will be providing education on the school's behalf, including through online delivery) and the date that confirmation was received.

If any checks have been conducted for volunteers, this will also be recorded on the SCR. If risk assessments are conducted to assess whether a volunteer should be subject to an enhanced DBS check, the risk assessment will be recorded.

Written confirmation that supply agencies have completed all relevant checks will also be included.

The school is free to record any other information it deems relevant.

The details of an individual will be removed from the SCR once they no longer work at the school.

25. Training

Staff members will undergo safeguarding and child protection training at induction, which will be updated on a **termly** basis and/or whenever there is a change in legislation.

The induction training will cover:

- The Child Protection and Safeguarding Policy.
- The Child-on-child Abuse Policy and procedures.
- The Staff Code of Conduct.
- Part one of 'Keeping children safe in education' (KCSIE) (or Annex A, if appropriate).
- The Behaviour Policy.
- The Children Missing Education Policy, including the safeguarding response to children who go missing from education.
- Appropriate child protection and safeguarding training, including online safety training.
- Information about the role and identity of the DSL and deputy DSLs.

All staff members will also receive regular safeguarding and child protection updates as required, but at least annually. Training will cover, at a minimum:

- The issues surrounding sexual violence and sexual harassment.
- Contextual safeguarding.
- How to keep LAC and PLAC safe.
- CCE and the need to refer cases to the National Referral Mechanism.
- Updated online safety training.

Staff will receive opportunities to contribute towards and inform the safeguarding arrangements in the school.

The DSL and deputy DSLs will undergo child protection and safeguarding training, and update this training at least every two years. The DSL and deputy DSLs will also obtain access to resources and attend any relevant or refresher training courses, ensuring they keep up-to-date with any developments relevant to their role. This will include training to understand:

- The assessment process for providing early help and statutory intervention, including local criteria for action and CSCS referral arrangements.
- How LAs conduct child protection case conferences and a child protection review conferences, to enable the DSL to attend and contribute to these effectively when required.
- The importance of providing information and support to CSCS.
- The lasting impact that adversity and trauma can have.
- How to be alert to the specific needs of children in need, pupils with SEND and/or relevant health conditions, and young carers.
- The importance of internal and external information sharing.
- The Prevent duty.

- The risks associated with online safety, including the additional risks faced online by pupils with SEND.

26. Monitoring and review

This policy is reviewed at least annually by the DSL and the headteacher. This policy will be updated as needed to ensure it is up-to-date with safeguarding issues as they emerge and evolve, including any lessons learnt.

Any changes made to this policy will be communicated to all members of staff. All members of staff are required to familiarise themselves with all processes and procedures outlined in this policy as part of their induction programme. The next scheduled review date for this policy is ■ September 2023

Safeguarding During the Coronavirus (COVID-19) Pandemic

Statement of intent

We understand that we face a time of great uncertainty and, as a school, we are doing all we can to provide clarity and safety to the school community. This appendix includes provisions which the school will have due regard for during the coronavirus pandemic. The information in this section is under constant review and is updated to reflect changes to government and local guidance as it is released.

1. Key definitions

1.1 For the purpose of this policy, the following definitions will be utilised:

- **Children of critical workers:** children of parents who work in the following industries:
 - Health and social care, e.g. doctors and nurses
 - Education and childcare, e.g. teachers and DSLs
 - Key public services, e.g. the justice system
 - Local and national government, e.g. administrative occupations
 - Food and other necessary goods, e.g. supermarket workers and grocers
 - Public safety and national security, e.g. police and ministry of defence workers
 - Transport, e.g. freight transport workers and train drivers
 - Utilities, communication and financial services, e.g. bankers, oil workers, and telecommunications (999 and 111 critical services)
- **Vulnerable children:** children who:
 - Are supported by social care.
 - Are on the edge of receiving support from social care.
 - Have safeguarding and welfare needs.
 - Have child in need plans.
 - Have child protection plans.
 - Are LAC.
 - Are young carers.
 - Are disabled.
 - Have an EHC plan.
 - Are adopted.
 - Are living in temporary accommodation.
 - Are at risk of becoming not in education, employment, or training (NEET).
 - Are assessed as otherwise vulnerable by education providers or LAs.

A child may also be deemed to be vulnerable if they have been assessed as being in need or otherwise meet the definition in section 17 of the Children Act 1989.

2. The role of the DSL and their deputies

- 2.1 In light of the current pandemic, the school will have additional measures in place to ensure the safety and wellbeing of its pupils – this approach will be led by the DSL.
- 2.2 The school will have a trained DSL or their deputy on site while all pupils attend school.
- 2.3 Where a DSL or deputy are unavailable on site, e.g. due to illness, a member of the SLT will take responsibility for coordinating safeguarding within the school. Their role will include:
 - Updating and managing access to child protection files.
 - Liaising with the offsite DSL or deputy.
 - Liaising with children's social care services where required.
- 2.4 During the pandemic, the DSL and their deputy will be responsible for:
 - Sharing their time and resources with other schools, where necessary.
 - Ensuring staff are kept up-to-date with the latest safeguarding information and developments, including via the safeguarding partners, newsletters and professional advice groups.
 - Being responsible for amending Appendix A (this section) in line with the continual changes to education policy released by the DfE and communicating all changes to staff and volunteers.
 - Working with the VSH and wider LA to protect vulnerable children.
 - Providing support to teachers and pastoral staff to ensure that contact is maintained with pupils at home and their families.
 - Ensuring staff are aware of reporting channels for safeguarding concerns.
 - Ensuring there is a consistent approach to safeguarding children throughout the coronavirus pandemic.
 - Speaking to pupils directly where possible to identify any concerns and ensuring pupils are provided with clear communication channels so they can report any concerns they have, including reports of peer-on-peer abuse.
 - Providing all volunteers and volunteer staff with copies of this policy.
 - Identifying a suitable member of the SLT to assume the role of temporary DSL should both themselves and their deputies become unable to work, e.g. due to illness.
 - Sharing their contact information with the school community.
 - Identifying vulnerable children and communicating additional safeguarding provisions to pupils and their families.
- 2.5 The DSL will report back to the governing board on all relevant safeguarding concerns.
- 2.6 The DSL will work with the local safeguarding partners to ensure pupils remain safe during full opening.
- 2.7 All online or telephone communication will be made using school accounts or telephone numbers. If any staff need to use their personal number, this is withheld.

3. Attendance

- 3.1 From the start of the Autumn term, attendance will be mandatory.
- 3.2 The school will have the power to issue fines for unauthorised absence; however, this will only be used as a last resort.
- 3.3 The school will resume its regular attendance register to record attendance after fully opening.
- 3.4 The school will report attendance figures to the DfE using the educational setting status form. This form will be submitted by 12:00pm each weekday.
- 3.5 Parents will not be penalised if their child does not attend school due to following clinical or public health advice to stay at home, e.g. if they are self-isolating.
- 3.6 In circumstances where pupils cannot attend school for reasons related to coronavirus, the school will use the following category of non-attendance: 'not attending in circumstances related to coronavirus (COVID-19)'. This category will only be used in the 2020/2021 academic year in specific circumstances, where a pupil does not attend school because their attendance at school, or travel to school, would go against:
 - Guidance from Public Health England (PHE) or the Department of Health and Social Care related to coronavirus.
 - Legislation or instruments, e.g. statutory directions, related to coronavirus.

This category of non-attendance will not count as an absence (authorised or unauthorised) and will be recorded using code X. This non-attendance category will be used for the following:

- Pupils who are required to self-isolate as they, or a member of their household, has symptoms or confirmed coronavirus
- Pupils who are required to self-isolate because they are a close contact of someone who has symptoms or confirmed coronavirus
- Pupils who are required by legislation to self-isolate as part of a period of quarantine (such as those returning from certain countries)
- Pupils who are clinically extremely vulnerable in a future local lockdown scenario only
- Pupils not eligible to attend school in certain local lockdown tiers of restriction, e.g. where attendance is limited to vulnerable pupils and the children of critical workers.

If a pupil is self-isolating due to having symptoms of coronavirus, but subsequently tests negative, code X will only be used up until the time of the negative result. The school will then use code I (illness) if the pupil remains unwell and stays at home, but will not retroactively amend the previous attendance registers because of the negative result.

- 3.7 The school will record and investigate any absences where a pupil who was expected to attend school did not, or where parents have arranged care for their child who subsequently did not attend. Where relevant, the school will report to social workers any pupil absence.
- 3.8 The school will ensure that all pupils' emergency contact information is correct and encourage parents to provide as many contact numbers as possible.

4. Staff training and safeguarding induction

- 4.1 The school will ensure that all existing school staff have read part one of the most up-to-date version 'Keeping children safe in education' (KCSIE) and are suitably trained in this policy and any local safeguarding arrangements.
- 4.2 The DSL and headteacher will risk assess any volunteers or staff from other schools to determine their suitability to work with children.
- 4.3 Under no circumstances will volunteers who have not been checked be left unsupervised or allowed to work in regulated activity.
- 4.4 The DSL and headteacher will ensure any volunteers or staff from other schools are suitably trained in safeguarding and ensure that they have read the relevant sections of KCSIE, are aware of the school's safeguarding policy and procedures, and any additional local safeguarding arrangements.
- 4.5 The DSL and headteacher will use their professional judgement to assess how much additional safeguarding training temporary staff or volunteers require.
- 4.6 The school will follow safer recruitment processes, in line with the relevant policies, when acquiring new staff.
- 4.7 New staff or volunteers will continue to be provided with a safeguarding induction and the most up-to-date copy of this policy.
- 4.8 Individuals who have not undergone suitable DBS checks will not be left unattended with pupils.
- 4.9 The school will carry out a check on any existing staff who cause a concern.
- 4.10 All staff will receive updates from the DSL regarding confirmation of local safeguarding processes and confirmation of the DSL and their deputy's arrangements, e.g. working schedule and contact information.
- 4.11 The school will report individuals who they consider a safeguarding risk to the Teaching Regulation Agency (TRA) by emailing Misconduct.Teacher@education.gov.uk – all referrals received by the TRA will continue to be considered but hearings may not be scheduled for the current time.
- 4.12 Where required, e.g. during certain tiers of restriction in a local lockdown, the school will have a rota system which allows the headteacher to be aware of who will be in school at any one given time.
- 4.13 The school will ensure the SCR is kept up-to-date in line with KCSIE. The SCR will be used as a record of attendance for staff and volunteers as well as a log of any risk assessments carried out on volunteers and staff on loan from other schools.

5. Online safety and security

- 5.1 The school will continue to ensure that appropriate filters and monitoring systems are in place to protect pupils when they are online on the school's IT systems.
- 5.2 All online programmes used will be checked by the school's IT provider and DSL to ensure they are reputable and GDPR compliant.

- 5.3 The ICT technician will work to ensure any loaned devices are secure and have the necessary antivirus malware protection downloaded.
- 5.4 Any online queries which require the ICT technician will be addressed over the phone or online as much as possible – face-to-face contact is kept to a minimum.
- 5.5 Where the ICT technician is unavailable, the school will seek the support of other ICT staff, either internally or from another school.
- 5.6 The DSL will report back to the governing board how they are ensuring pupils remain safe online during partial school closure.
- 5.7 Pupils will report any suspicious online activity they encounter to the DSL or headteacher.
- 5.8 Staff will adhere to the Staff Handbook at all times when delivering education online.
- 5.9 Staff will continue to look out for signs of a child being at risk online and report concerns over a pupil's safety online to the DSL. Where relevant, the DSL will make referrals to the police and children's social care.
- 5.10 The school will collaborate with parents to reinforce the importance of online safety, and encourage parents to set age-appropriate parental controls on digital devices and use internet filters to block malicious websites.
- 5.11 Pupils will be provided with useful information and contact details of individuals and organisations they can turn to should they feel unsafe online, e.g. Childline or the UK Safer Internet Centre.

6. Mental health and pastoral care

- 6.1 The school understands how the coronavirus pandemic can cause pupils and staff to feel anxious and concerned and will offer any essential support required to those in need.
- 6.2 The headteacher will encourage line managers to hold one-to-one meetings with their staff over the phone or via a video call to ensure they feel supported during this stressful time.
- 6.3 Pupils will be provided with different resources they can access to help them cope with their mental health, including Childline and other online services.
- 6.4 Face-to-face support will only be provided where two-metre social distancing can be adhered to.
- 6.5 The school will have due regard for the Social, Emotional and Mental Health (SEMH) when identifying early signs of mental health issues in pupils.
- 6.6 Teachers will have due regard for the negative impact the current pandemic may have had on pupils, especially when setting expectations for pupils' work.
- 6.7 Pastoral support will be offered to any family who requires it.
- 6.8 The school will utilise funding from the DfE's Wellbeing for Education Return programme.
- 6.9 For pupils who are receiving education at home, e.g. pupils who are self-isolating, the school will help parents and pupils make a weekly plan or structure that includes time for education, playing and relaxing.

- 6.10 The school will consider one-to-one support for those who may benefit the most from it, e.g. for pupils with SEND.

7. Remote education

- 7.1 Teachers will plan online lessons with the safety of pupils in mind – the school does not expect teachers to live stream or provide pre-recorded videos.
- 7.2 Staff communicating with pupils or parents via videocall will do so from within the school, or from a quiet room with a neutral background if working from home.
- 7.3 Teachers will ensure all online planning processes for pupils who are working online will have clear reporting routes to the school and external agencies so they can raise concerns whilst online.
- 7.4 The school will collaborate with the LA where possible when planning online lessons and activities, and considering online safety.
- 7.5 The DSL will ensure every pupil has their contact information so they know how they can contact them about any safeguarding concern.
- 7.6 Pupils will be provided with online safety information by their teacher.
- 7.7 Pupils will be directed to practical online support, such as Childline, where they feel unsafe and require support outside of school.
- 7.8 Parents will be given a list of websites their child may access and any information regarding online sessions with staff that their child will be participating in.
- 7.9 Parents will be provided with the contact details of the DSL so they can report any concerns.
- 7.10 When communicating online, staff will:
- Communicate within school hours as much as possible.
 - Communicate through the school channels approved by the SLT.
 - Use school email accounts over personal accounts wherever possible.
 - Use school devices over personal devices wherever possible.
 - Not share personal information.

8. Peer-on-peer abuse

- 8.1 The DSL will implement robust reporting procedures for peer-on-peer abuse and communicate these to all staff, pupils and parents.
- 8.2 Reports made regarding peer-on-peer abuse will be risk assessed by the DSL on a case-by-case basis and, where required, investigated immediately and reported to the relevant authority, e.g. the police or children's social care services (CSCS) where required.
- 8.3 Both the alleged perpetrator and victim will be provided with support whilst the report is being investigated.
- 8.4 Pupils will be provided with the contact details of relevant bodies who can provide support to them during this time, e.g. Childline.

- 8.5 The DSL will keep the victim, the alleged perpetrator and their families up-to-date where necessary with details of the investigation, including the conclusion and how appeals can be made.
- 8.6 Individuals will be given support to assist them with the appeals process.
- 8.7 Communications will be made online or by telephone unless face-to-face contact is unavoidable.

9. Pupils moving schools

- 9.1 Where school pupils are moving to another setting, the school will continue to do whatever they reasonably can to provide the receiving institution with any relevant welfare and child protection information.
- 9.2 The DSL will ensure that the receiving school has access to pupils' EHC plans, child in need plans, child protection plans or, for LAC, their personal education plan, and is informed who the child's social worker is (and, for LAC, who the responsible VSH is).

10. Monitoring and review

- 10.1 The DSL will be responsible for continually monitoring DfE updates and updating this appendix in line with any government guidance changes and up-to-date guidance from the local safeguarding partners.
- 10.2 Any changes to this appendix will be communicated to all staff, parents and relevant stakeholders.

Staff Disqualification Declaration

Levett School:	
Name of staff member:	Position:
Orders and other restrictions	Yes/No
Have any orders or other determinations related to childcare been made in respect of you?	
Have any orders or other determinations related to childcare been made in respect of a child in your care?	
Have any orders or other determinations been made which prevent you from being registered in relation to childcare, children's homes or fostering?	
Are there any other relevant orders, restrictions or prohibitions in respect of you as set out in Schedule 1 of the Childcare (Disqualification) and Childcare (Early Years Provision Free of Charge) (Extended Entitlement) (Amendment) Regulations 2018?	
Are you barred from working with children by the DBS?	
Are you prohibited from teaching?	
Specified and statutory offences	
Have you ever been cautioned, reprimanded, given a warning for or convicted of:	
• Any offence against or involving a child?	
• Any violent or sexual offence against an adult?	
• Any offence under The Sexual Offences Act 2003?	
• Any other relevant offence?	
Have you ever been cautioned, reprimanded for or convicted of a similar offence in another country?	
Provision of information	
If you have answered yes to any of the questions above, provide details below. You may provide this information separately, but you must do so without delay.	
Details of the order restriction, conviction or caution:	
The date(s) of the above:	
The relevant court(s) or body/bodies):	
You should also provide a copy of the relevant order, caution, conviction, etc. In relation to cautions/convictions, a DBS Certificate may be provided.	
Declaration	

In signing this form, I confirm that the information provided is true to the best of my knowledge and that:

- I understand my responsibilities to safeguard children.
- I understand that I must notify my headteacher immediately of anything that affects my suitability to work within the school. This includes any cautions, warnings, convictions, orders or other determinations made in respect of me that would render me disqualified from working with children.

Signed:

Print name:

Date:

Safeguarding Reporting Process

The process outlined within the first section should be followed where a staff member has a safeguarding concern about a child. Where a referral has been made, the process outlined in the 'After a referral is made' section should be followed.

The actions taken by the school are outlined in yellow, whereas actions taken by another agency are outlined in blue.

Before a referral is made

A staff member identifies a concern or potential concern. Is the pupil at immediate risk of harm?

N

Y

Is the DSL or the deputy DSL available to discuss the concern with?

The staff member immediately notifies the police of the situation and informs the DSL.

Y

N

The staff member discusses the concern with the DSL. Taking into account observations and using professional judgement, is a referral required?

The staff member makes a referral to children's social care services (CSCS), notifying the DSL of this as soon as possible.

Y

N

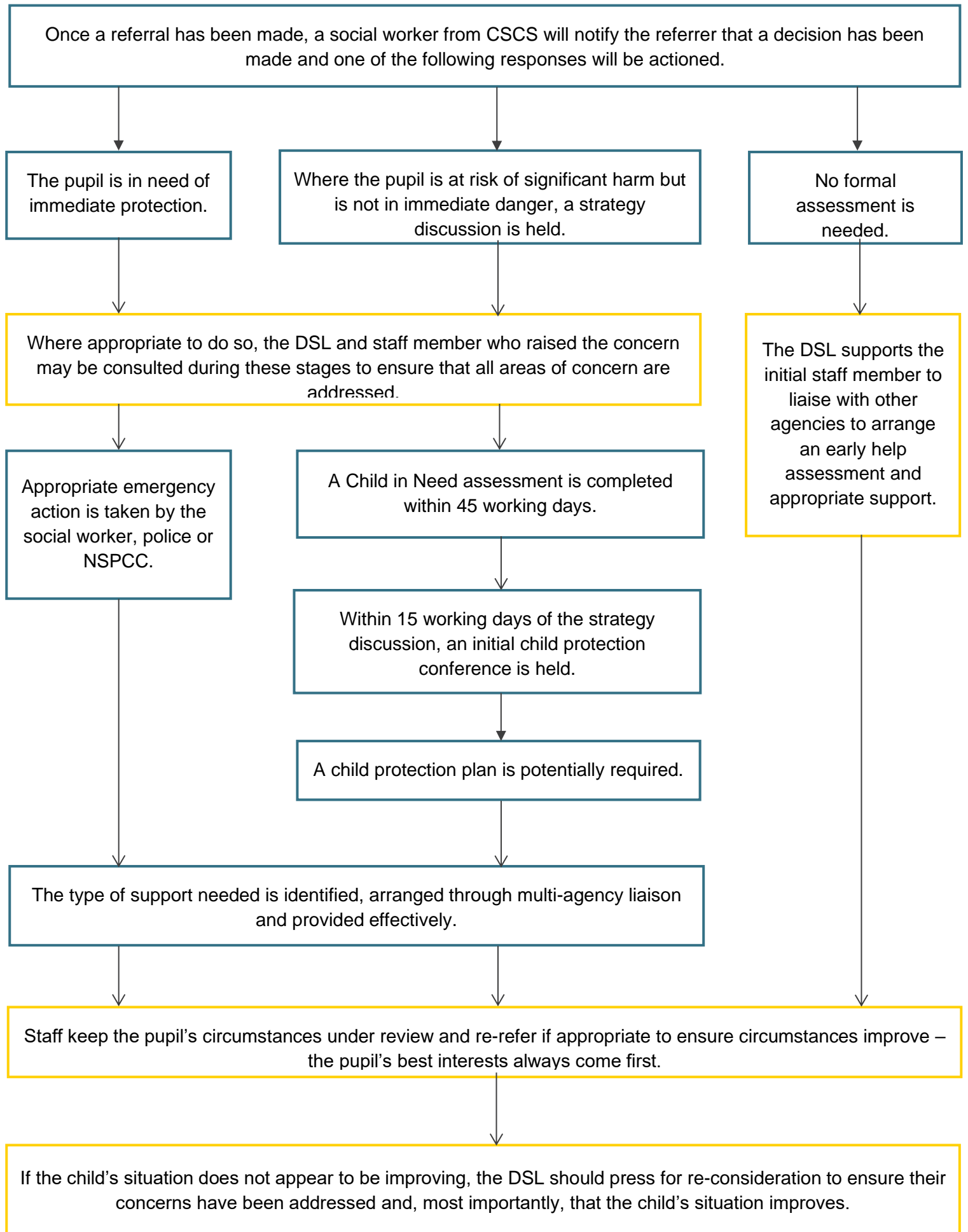
The DSL makes a referral to CSCS, keeping the staff member who raised the concern up-to-date with what action is taken.

The pupil continues to be monitored and early help is provided where necessary. If the concern escalates, a referral is made to the CSCS.

Within one working day, a social worker from CSCS will make a decision about the type of response that is required and will notify the referrer. Where this information is not forthcoming, the referrer should contact the appointed social worker to follow up the referral.

The steps outlined in the next flowchart are then followed.

After a referral is made



Contacts and Advice

Expert organisations

- Barnardo's
- Lucy Faithfull Foundation
- NSPCC
- Rape Crisis
- University of Bedfordshire: Contextual Safeguarding
- UK Safer Internet Centre

Support for victims

- Anti-Bullying Alliance
- MoJ Victim Support
- Rape Crisis
- The Survivor's Trust
- Victim Support

Toolkits

- Brook
- NSPCC
- Safeguarding Unit, Farrer and Co, and Carlene Firmin, MBE, University of Bedfordshire

Further information on confidentiality and information sharing

- Gillick Competency Fraser Guidelines
- Government Information Sharing Advice
- Information Commissioner's Office: Education
- NSPCC: Things to Know and Consider

Further information on sexting

- UK Council for Child Internet Safety: Sexting Advice
- London Grid for Learning – Collection of Advice

Support for parents

- Parentzone
- Parentsafe – London Grid for Learning
- CEOP Thinkuknow – Challenging Harmful Sexual Attitudes and their Impact
- CEOP Thinkuknow – Supporting Positive Sexual Behaviour